

# AS YOU LIKE IT

The Alley Theatre: 2015

## Courtiers of Frederick's Court

Designer: Tricia Barsamian

Position: Crafts Assistant

Photos from John Everett



Ariella Hauser, Billy Reed, Nicole Rodenburg, Dylan Marks, Todd Waite, Elizabeth Bunch, Jay Sullivan, Emily Trask, John Feltch, Melissa Pritchett, Jarred Tettey, David Rainey, Spencer Tolleson, Joy Jones, and Trace Pool

In this production the Court of Duke Frederick had a very stylized period look. As an Assistant in Crafts I was charged with the planning and construction of all the ruffs. Early in discussions Tricia was able to provide measurements for the how tall, deep, and curved each ruff should be. With these I began planning what size horsehair, how wide the strips of organdy would be, and the spacing for each securing point. For first fittings I had each ruff trimmed and tacked in its pleats to represent the finished product. Petersham was added after the fittings to control the interiors and allow them to snap to the garments(2).

Photo from John Everett



Melissa Pritchett



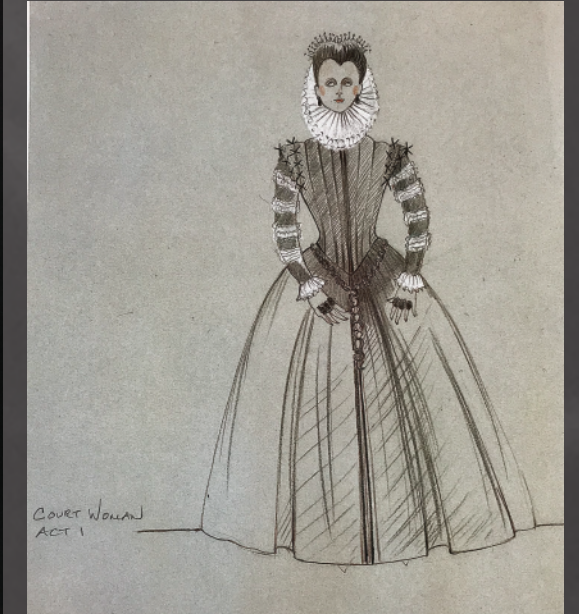
Photo from John Everett



Joy Jones



Ariella Hauser



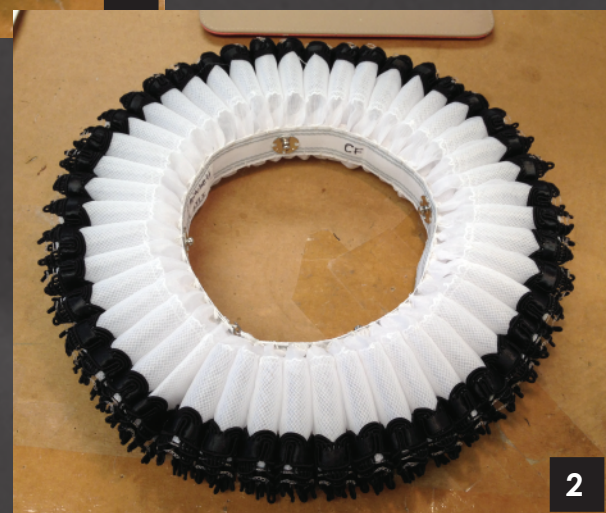
This ruff is 2" tall, 3" deep, and 3/4" in diameter at the curve. Construction was 2" horsehair inserted into a folded length of organdy and stitched down the sides to secure. Trimming the outside edge before it was pleated give it a definite top and bottom (1).

This ruff is 3" tall, 2" deep, and 1" in diameter at the curve. With such large and open curves it was important to control the organdy to hide the base (3). Running basting stitches along the top and bottom forced the organdy to fall in controlled stacks when attached (4, 5). Required two rows of petersham to control at neck.

This ruff was only 1.5" tall, 4" deep, and 1/2" in diameter at the curve. The 3" horsehair needed an additional securing stitch down the center to keep the organdy from bubbling. To keep the desired angle from front to back required a wire support (7). The support was constructed with millinery wire, hymark, and net strips (6) and attached with ties.



1



2



3



4

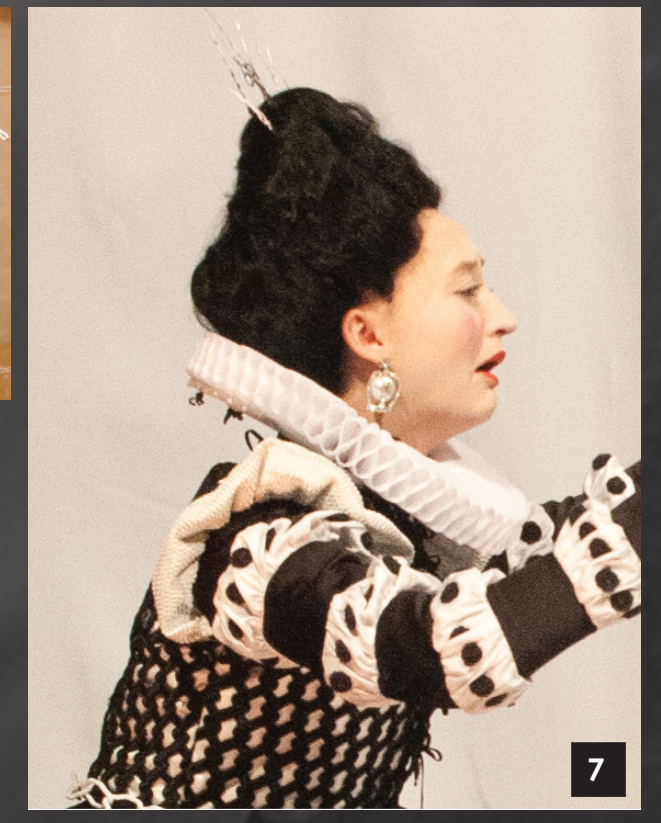


5

The cuffs had the same height but were slightly less curved and much narrower. They were made with 1/2" horsehair and trimmed along the top edge.



6



7